



**India Meteorological Department
(Ministry of Earth Sciences)**

NATIONAL BULLETIN NO.: 04 (BOB/08/2024)

TIME OF ISSUE: 1230 HOURS IST

DATED: 21.12.2024

FROM: INDIA METEOROLOGICAL DEPARTMENT (FAX NO. 24643965/24699216/24623220)

TO: CONTROL ROOM, NDM, MINISTRY OF HOME AFFAIRS (FAX.NO. 23093750)

CONTROL ROOM NDMA (FAX.NO. 26701729)

CABINET SECRETARIAT (FAX.NO.23012284, 23018638)

PS TO HON'BLE MINISTER FOR S & T AND EARTH SCIENCES (FAX NO.23316745)

SECRETARY, MOES (FAX NO. 24629777)

H.Q. (INTEGRATED DEFENCE STAFF AND CDS) (FAX NO. 23005137/23005147)

DIRECTOR GENERAL, DOORDARSHAN (23385843)

DIRECTOR GENERAL, AIR (23421105, 23421219)

PIB MOES (FAX NO. 23389042)

UNI (FAX NO. 23355841)

D.G. NATIONAL DISASTER RESPONSE FORCE (NDRF) (FAX NO. 26105912, 2436 3260)

DIRECTOR, PUNCTUALITY, INDIAN RAILWAYS (FAX NO. 23388503)

CHIEF SECRETARY, ANDAMAN & NICOBAR ISLANDS (FAX NO. 03192-232656)

CHIEF SECRETARY, TAMIL NADU (FAX NO. 044-25672304)

CHIEF SECRETARY, PUDUCHERRY (FAX NO. 0413-2334145)

CHIEF SECRETARY, ANDHRA PRADESH (FAX NO. 0863-2441029)

CHIEF SECRETARY, ODISHA (FAX NO. 0674-2536660)

CHIEF SECRETARY, WEST BENGAL (FAX NO. 033-22144328)

Sub: Depression over westcentral Bay of Bengal

The depression over westcentral Bay of Bengal off Andhra Pradesh coast moved east-northeastwards with the speed of 12 kmph during past 6 hours and lay centred at 0830 hrs IST of 21st December 2024 over the westcentral Bay of Bengal, near latitude 14.0°N and longitude 84.5°E, about 430 km south-southeast of Visakhapatnam (Andhra Pradesh), 480 km east-northeast of Chennai (Tamil Nadu) and 590 km south- of Gopalpur (Odisha).

The system is likely to move slowly east-northeastwards maintaining its intensity as a depression for next 12 hours and weaken gradually thereafter over the Sea.

Warnings:

(ii) Wind warning:

Squally wind speed reaching 45-55 kmph gusting to 65 kmph is likely to prevail over westcentral and adjoining central parts of South Bay of Bengal till morning of 23rd December.

Squally wind speed reaching 35 to 45 kmph gusting to 55 kmph is likely to prevail along and off South Odisha-Andhra Pradesh-north Tamil Nadu coasts on 21st & 22nd December;

(iii) Sea Condition:

Rough to very rough sea conditions are very likely to prevail over westcentral and adjoining central parts of South Bay of Bengal till morning of 23rd December.

Rough sea conditions are very likely along & off South Odisha-Andhra Pradesh coast-north Tamil Nadu coasts till on 21st & 22nd December.

Spatial rainfall distribution: Isolated: <25%, A few: 26-50%, Many: 51-75%, Most: 76-100%

Rainfall amount (mm): Heavy rain: 64.5 – 115.5, Very heavy rain: 115.6 – 204.4, Extremely heavy rain: 204.5 or more.

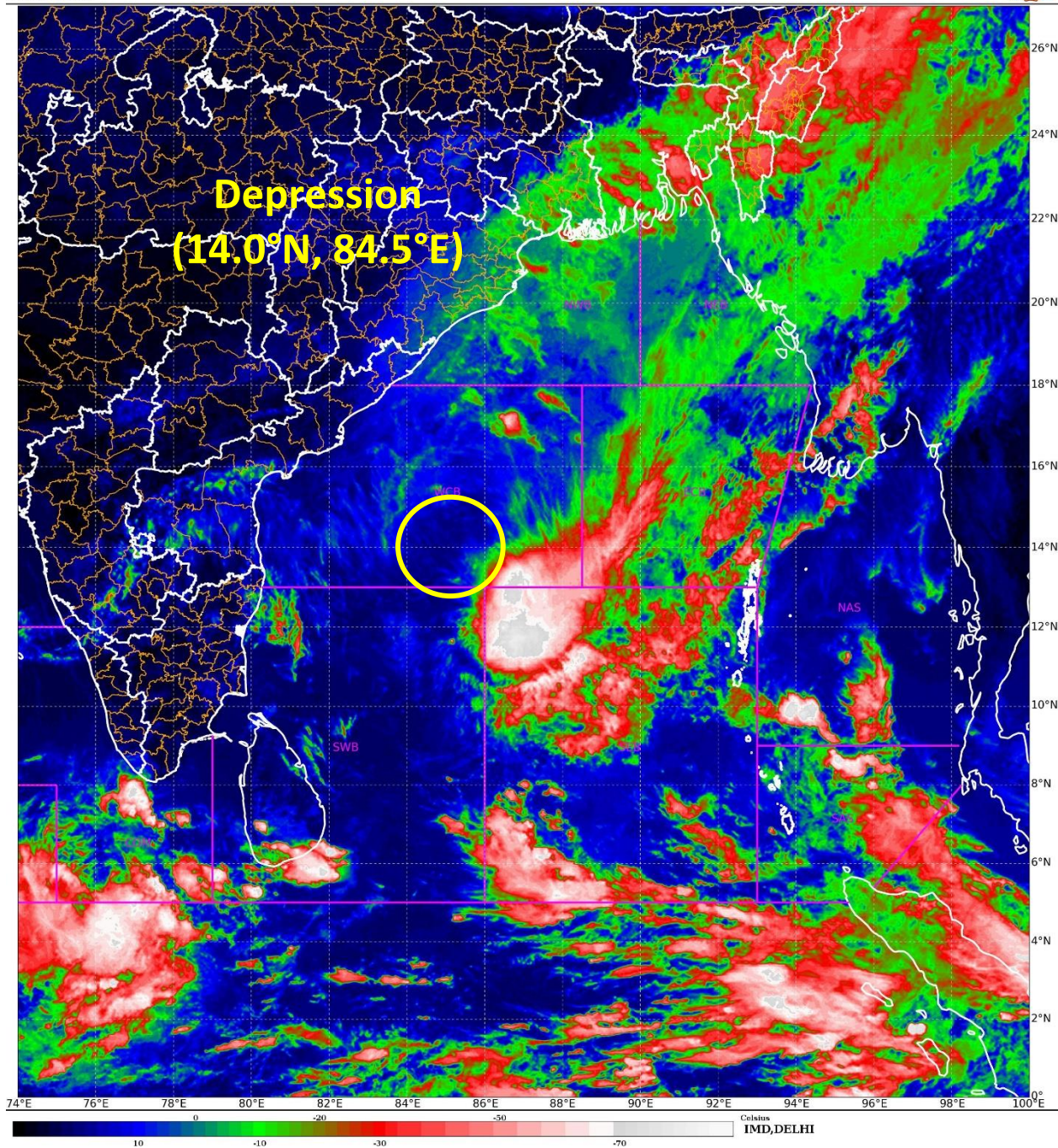
(iv) Fishermen Warning:

Fishermen are advised not to venture into westcentral & adjoining central parts of South Bay of Bengal till morning of 23rd December and along & off south Odisha-Andhra Pradesh-north Tamil Nadu coasts till on 21st & 22nd December.

Next Bulletin will be issued on 1430 hrs IST of 21st December 2024.

(Dr Ananda Kumar Das)
Scientist-F, RSMC, New Delhi

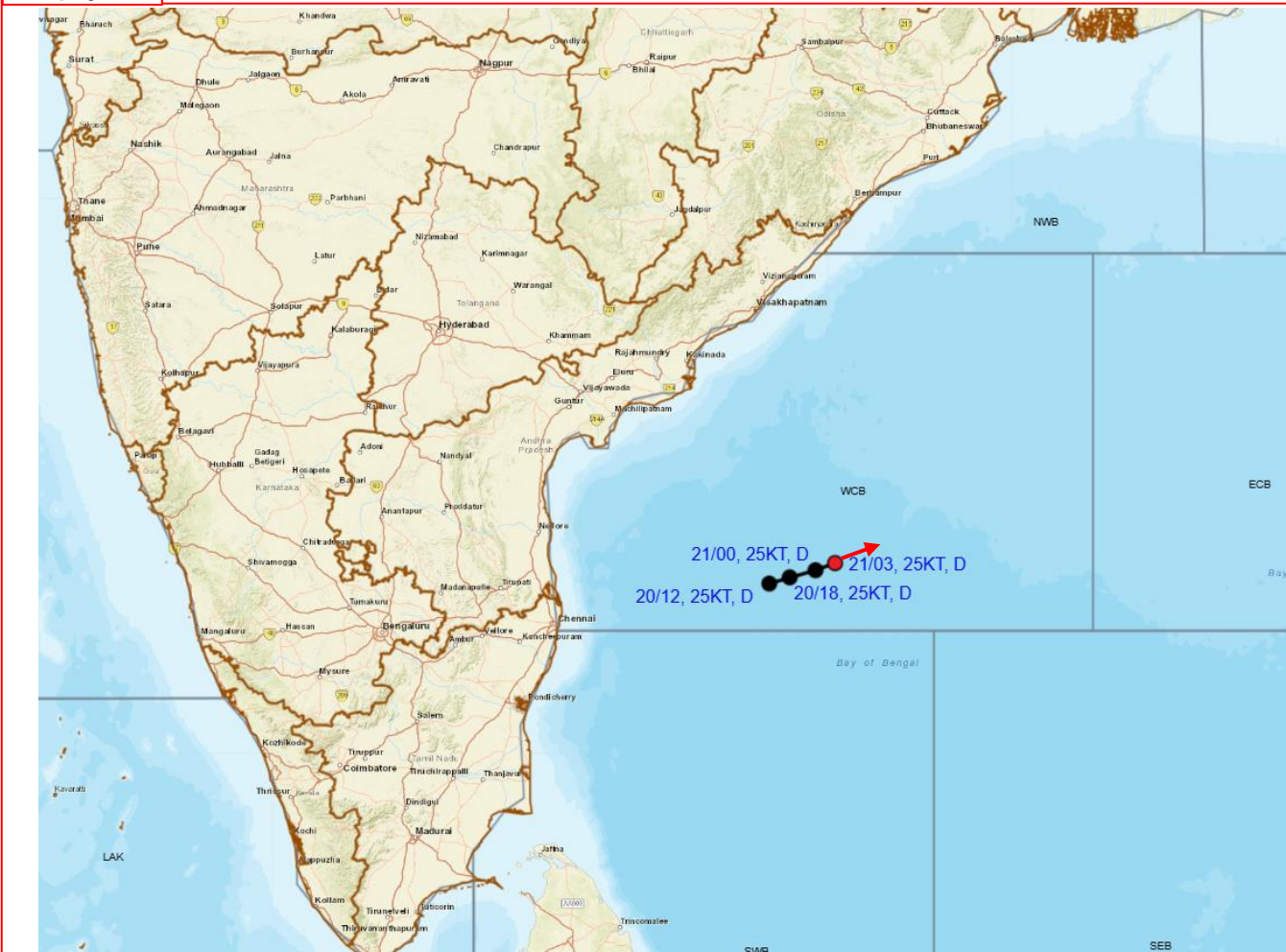
*Copy to: CRS, Pune/ACWC Chennai /ACWC Kolkata /CWC Vishakhapatnam/CWC
Bhubaneswar/MC Amaravati/MC Port Blair*



Spatial rainfall distribution: Isolated: <25%, A few: 26-50%, Many: 51-75%, Most: 76-100%
Rainfall amount (mm): Heavy rain: 64.5 – 115.5, Very heavy rain: 115.6 – 204.4, Extremely heavy rain: 204.5 or more.



OBSERVED AND FORECAST TRACK OF DEPRESSION OVER WESTCENTRAL BAY OF BENGAL ON 0300 UTC (0830 HRS. IST) OF 21st DECEMBER. 2024.

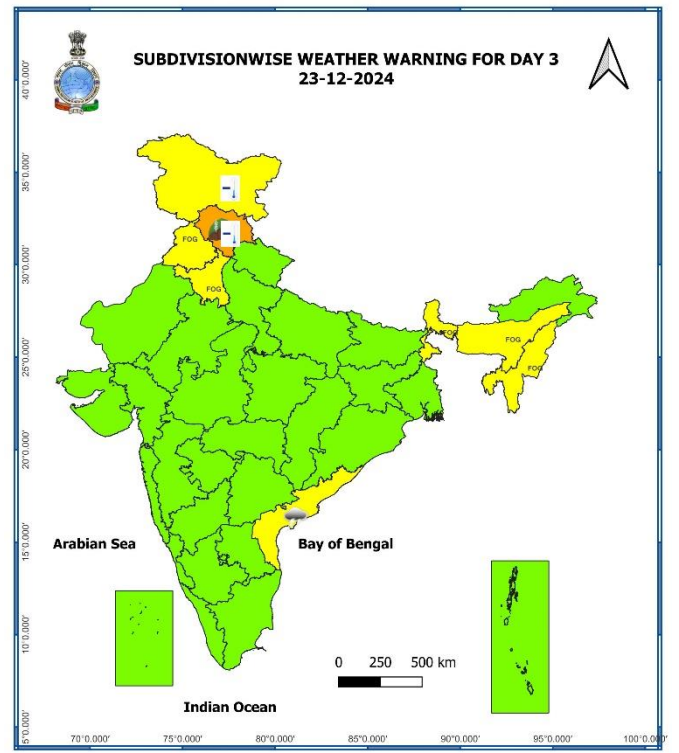
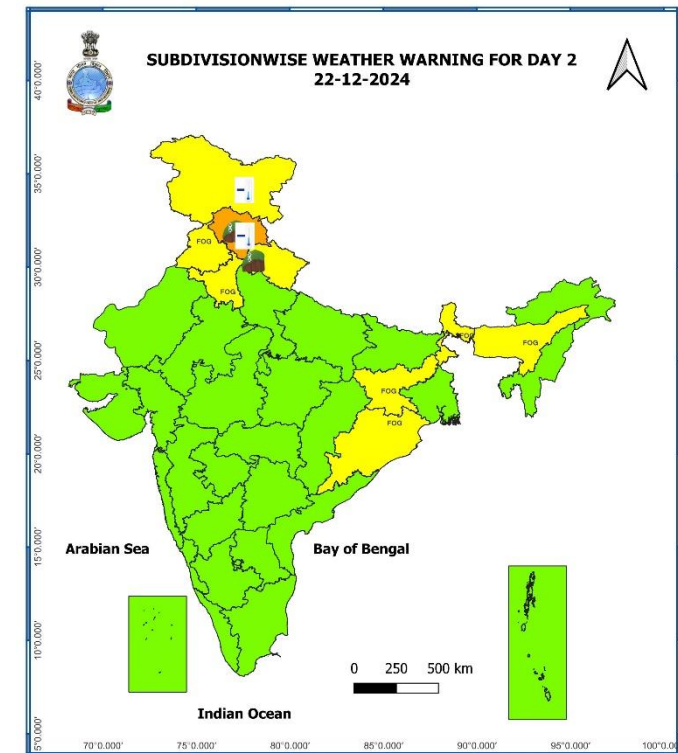
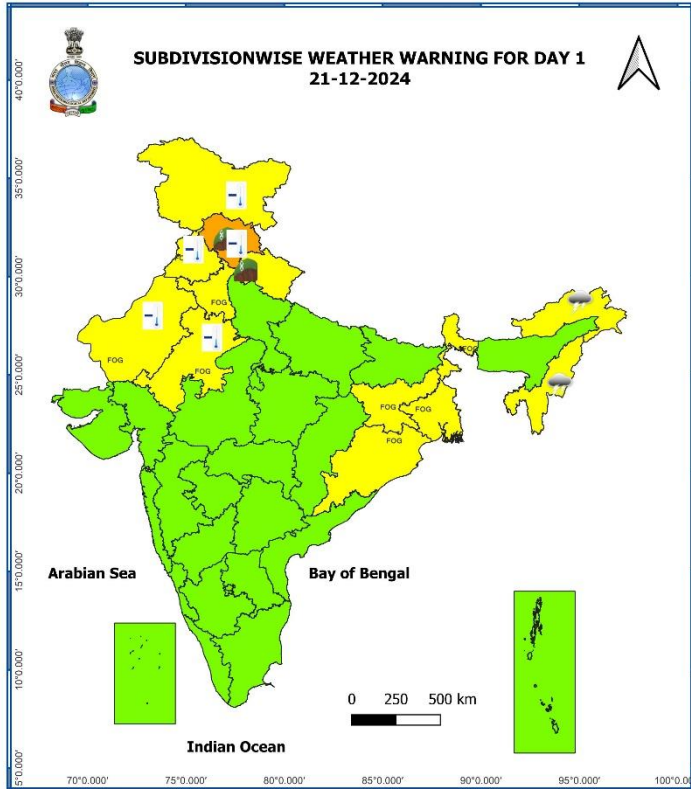


DATE/TIME	: IN UTC
IST	: UTC + 0530
KT	: NAUTICAL MILE S/HOUR = 1.85 KM/HOUR
LPA	: LOW PRESSURE AREA
WML	: WELL MARKED LOW PRESSURE AREA
D	: DEPRESSION (17-27 KT)
DD	: DEEP DEPRESSION (28-33 KT)
CS	: CYCLONIC STORM (34-47 KT)
SCS	: SEVERE CYCLONIC STORM (48-63 KT)
VSCS	: VERY SEVERE CYCLONIC STORM (64-89 KT)
ESCS	: EXTREMELY SEVERE CYCLONIC STORM (90-119 KT)
SuCS	: SUPER CYCLONIC STORM (≥120 KT)

	LESS THAN 34 KT
	34-47 KT
	≥ 48 KT
	OBSERVED TRACK
	FORECAST TRACK
	CONE OF UNCERTAINTY

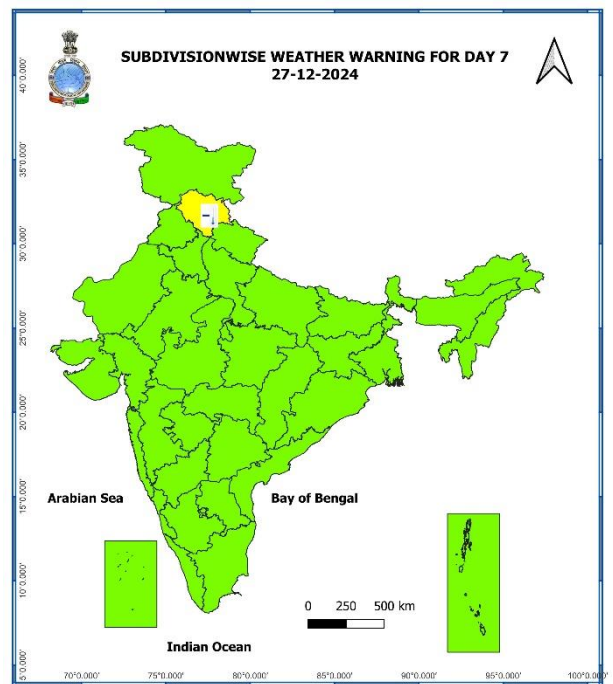
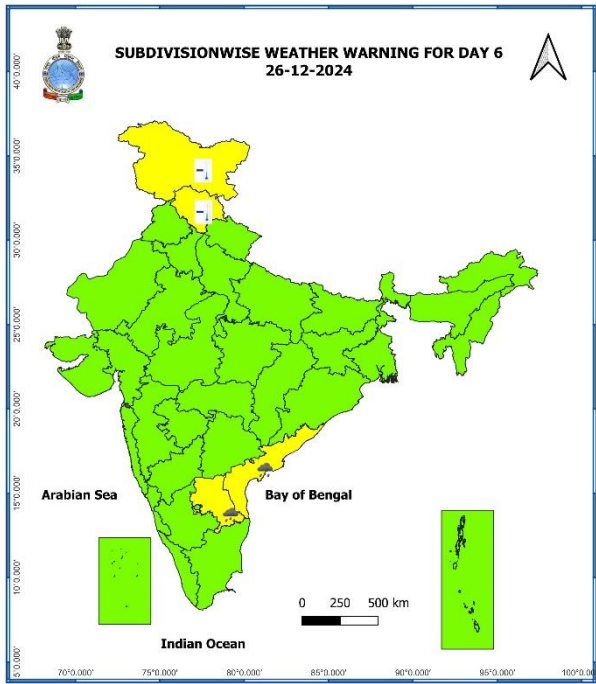
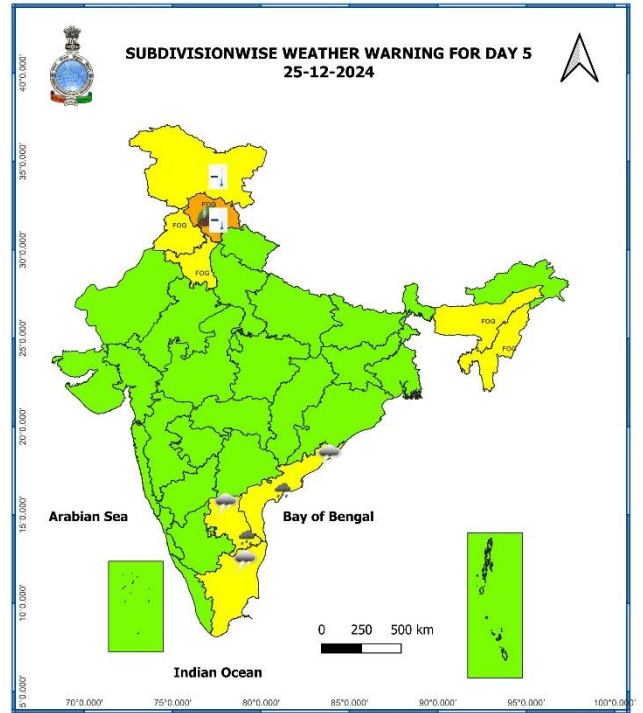
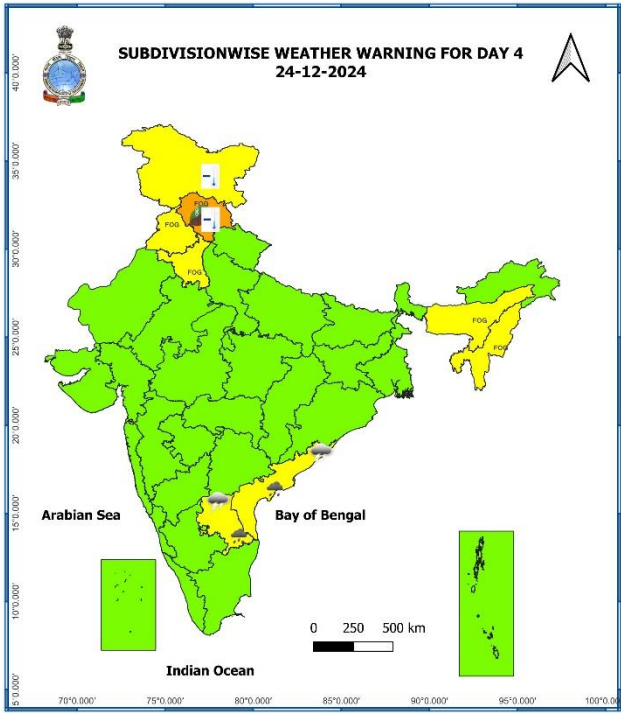
Spatial rainfall distribution: Isolated: <25%, A few: 26-50%, Many: 51-75%, Most: 76-100%
Rainfall amount (mm): Heavy rain: 64.5 – 115.5, Very heavy rain: 115.6 – 204.4, Extremely heavy rain: 204.5 or more.

Weather Warning Graphics



Spatial rainfall distribution: Isolated: <25%, A few: 26-50%, Many: 51-75%, Most: 76-100%
Rainfall amount (mm): Heavy rain: 64.5 – 115.5, Very heavy rain: 115.6 – 204.4, Extremely heavy rain: 204.5 or more.

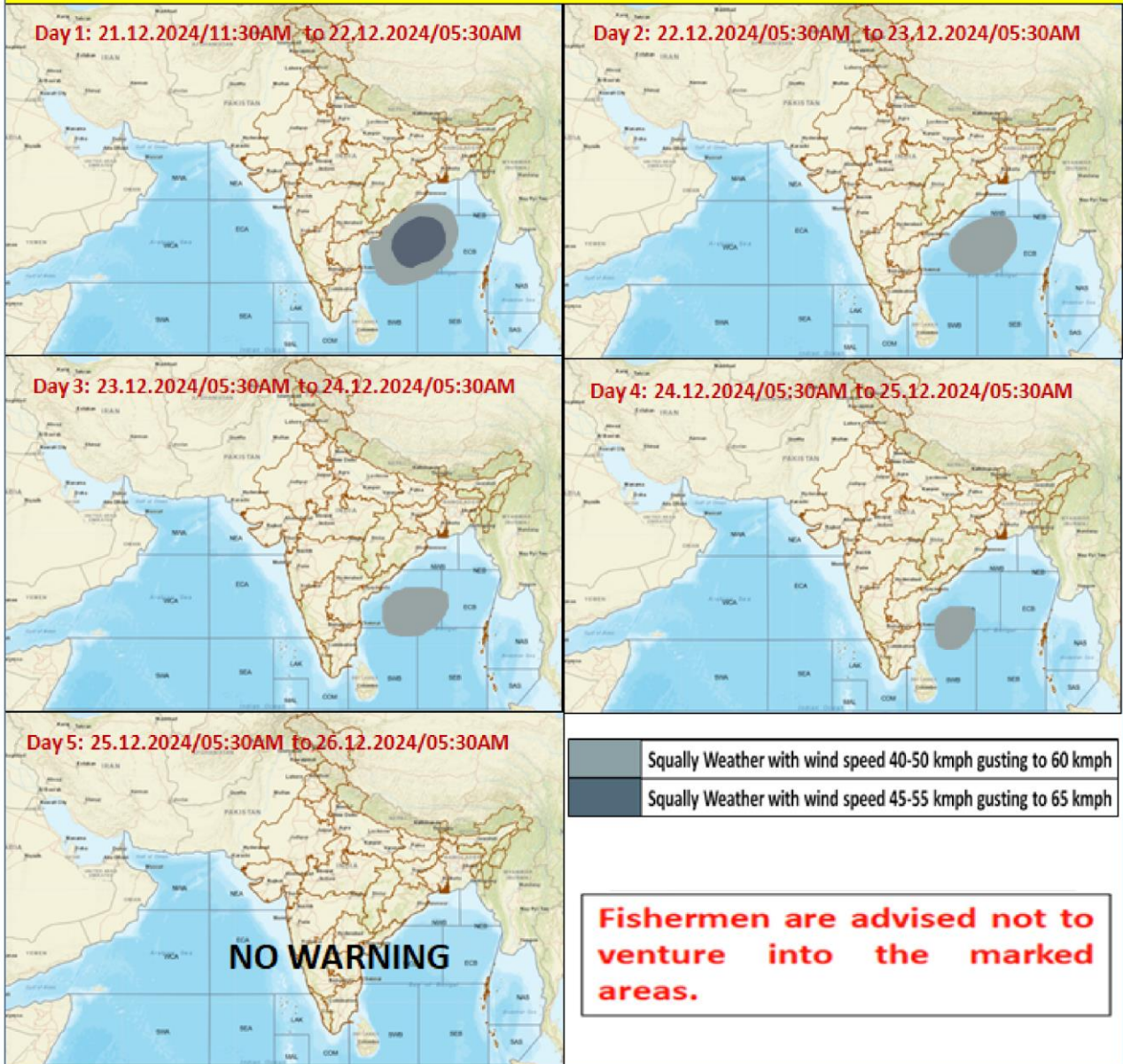
S



- Action may be taken based on **ORANGE AND RED COLOUR** warnings.
- Vulnerable regions likely urban and hilly areas action may be initiated for heavy rainfall warning.
- As the lead period increases forecast accuracy decreases

Spatial rainfall distribution: Isolated: <25%, A few: 26-50%, Many: 51-75%, Most: 76-100%
Rainfall amount (mm): Heavy rain: 64.5 – 115.5, Very heavy rain: 115.6 – 204.4, Extremely heavy rain: 204.5 or more.

Fishermen Warning Graphics



Spatial rainfall distribution: Isolated: <25%, A few: 26-50%, Many: 51-75%, Most: 76-100%
Rainfall amount (mm): Heavy rain: 64.5 – 115.5, Very heavy rain: 115.6 – 204.4, Extremely heavy rain: 204.5 or more.